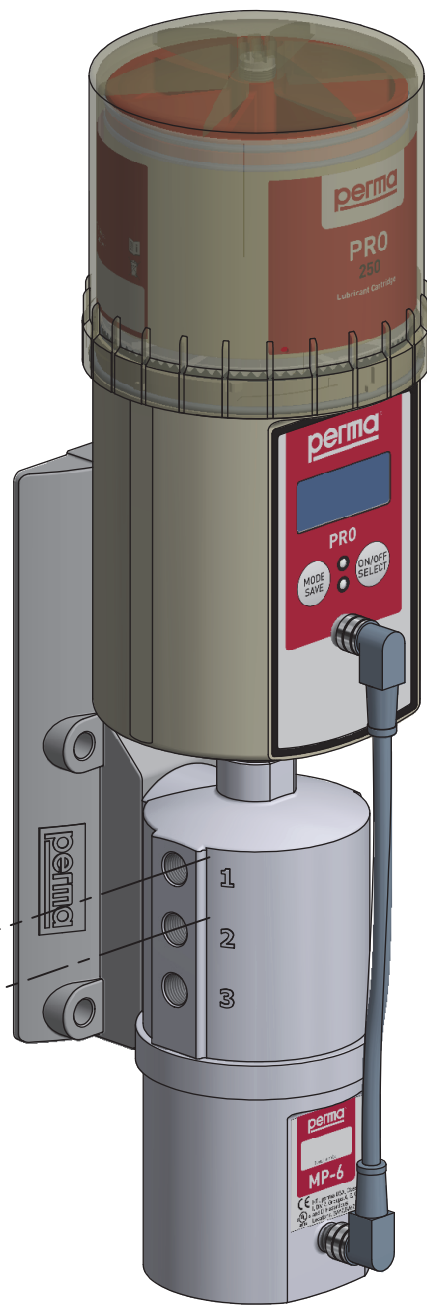


All metal to metal connections must be glued together with Loctite® 243™ (Art. No. 110278).

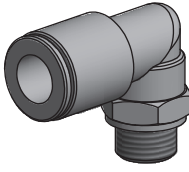
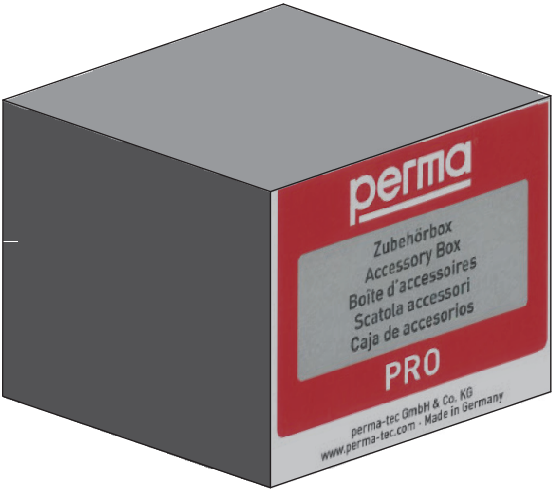
perma PRO MP-6
perma PRO C MP-6
perma PRO LINE
perma PRO C LINE

Art. No. 101576

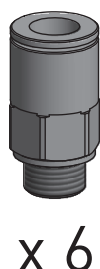
Art. No. 101577



Art. No. 107629:
6 x Art. No. 101570
6 x Art. No. 101571
4 x Art. No. 103288



x 6



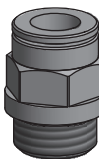
x 6



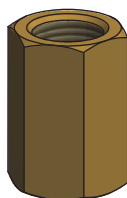
x 4



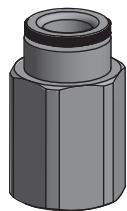
Art. No. 101569



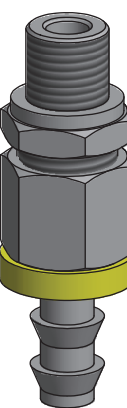
Art. No. 101496



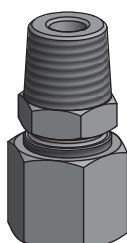
Art. No. 104853
Art. No. 104882



Art. No. 101502



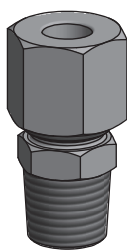
Art. No. 101554



Art. No. 104868



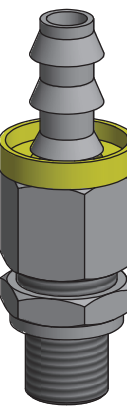
Art. No. 101549
(1000 mm)



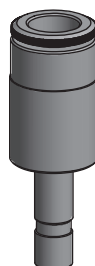
Art. No. 104868



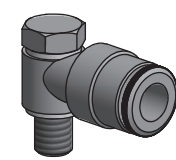
Art. No. 101555



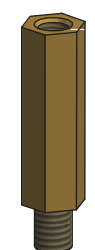
Art. No. 101554



Art. No. 101512



Art. No. 101515



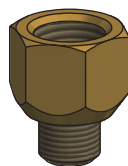
Art. No. 104858
(14 mm)

Art. No. 104859
(30 mm)

For more connecting parts please see our perma catalog at www.perma-tec.com



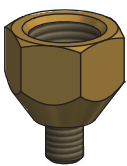
Art. No. 104840



Art. No. 104833



Art. No. 104837



Art. No. 104833

Scale: ohne	Date: 13.02.17	Material:	Description:
Size: A1	Revision / drawn: B / sbr	Part No.	PRO MP-6 Anschlussvarianten



101576	Extension 16 mm G1/8 male x G1/8 female (brass nickel-plated)
101577	Extension 36 mm G1/8 male x G1/8 female (brass nickel-plated)
107629	MP-6 Accessories box 6 x Tube connector G1/8 male for tube oØ 8 mm 90° – rotary type 6 x Tube connector G1/8 male for tube oØ 8 mm straight 4 x Plugs for MP-6
101569	Tube up to +100 °C oØ 8 mm x iØ 5 mm (PA) - for PRO
101496	Tube connector G1/4 male for tube oØ 8 mm straight (brass nickel-plated)
101512	Extension for tube oØ 6 mm to oØ 8 mm (brass nickel-plated)
101515	Tube connector M6 male for tube oØ 6 mm 90° - swivel type (brass nickel-plated)
104858	Extension 14 mm M6x0.75 male x M6 female (brass)
104859	Extension 30 mm M6x0.75 male x M6 female (brass)
104853	Sleeve G1/4 female (brass)
104882	Sleeve G1/4 female (stainless steel)
104868	Cutting ring coupling R1/4 male for oØ 8 mm straight (stainless steel)
101549	Tube up to +260 °C oØ 11 mm x iØ 8 mm 1000 mm (PTFE / stainless steel)
101550	Tube up to +260 °C oØ 11 mm x iØ 8 mm 1500 mm (PTFE / stainless steel)
101502	Tube connector G1/4 female for tube oØ 8 mm straight (brass nickel-plated)
101554	Hose connector G1/4 male for hose iØ 9.5 mm - push-lock (steel, zinc-plated)
101555	Heavy Duty hose up to +100 °C oØ 16 mm x iØ 9.5 mm (with NBR lining and fabric insert)
104833	Reducer G1/8 male x G1/4 female (brass)
104837	Reducer M6 male x G1/4 female (brass)
104838	Reducer M8x1 male x G1/4 female (brass)
104840	Reducer M10x1 male x G1/4 female (brass)

All metal to metal connections must be glued together with Loctite® 243™ (Art. No. 110278).

For more connecting parts please see our perma catalog at www.perma-tec.com